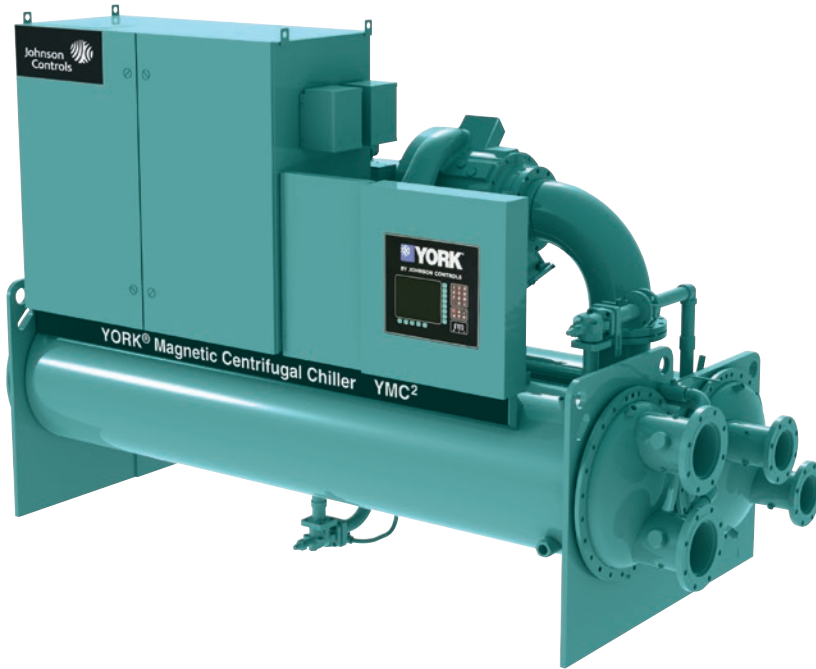


YMC² Water-cooled magnetic centrifugal chiller

Cooling capacities from 800 kW to 3500 kW



“Tailor and tune”
customized units around
job specific design.

Features

Enhanced efficiency

Achieved through application of active magnetic bearing technology with variable speed drive.

Enhanced sustainability

Achieved by leak free refrigerant design, lower refrigerant charge and falling film evaporator.

Low sound levels

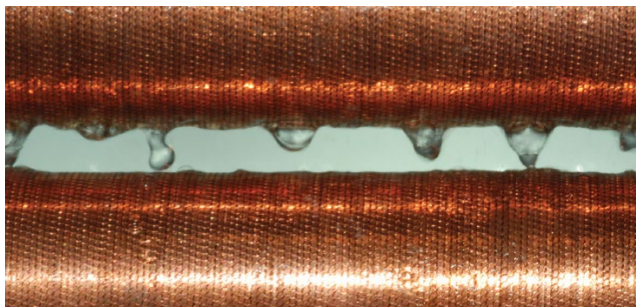
Advanced technology results in sound levels as low as 75dBA.

Superior reliability

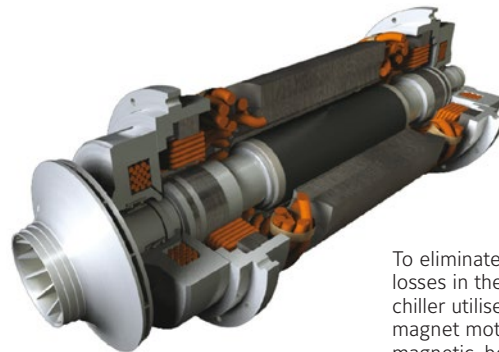
Use of active magnetic bearing technology removes friction and the need for oil resulting in a quieter and more reliable chiller.

Superior reliability

Between the centrifugal technologies, this series has the smallest dimensions, fitting where others simply cannot.



A falling-film evaporator is more efficient because refrigerant is sprayed over the tubes, offering improved heat transfer and reducing refrigerant charge by 30%.



To eliminate mechanical-contact losses in the driveline, the YMC² chiller utilises a permanent-magnet motor and active magnetic-bearing technology.

Water-cooled magnetic centrifugal chiller

YMC² S0800AA to S3500AB



YMC² are customized centrifugal units with job specific design. See below table as a reference, within Ecodesign capacity range.

Performances

YMC ²	S0800AA	S1000AA	S1200AB	S1400AA	S1600AB	S1800AB	S2000AB
Cooling capacity (kW)	800	1000	1200	1400	1600	1800	2000
EER	6.06	6.13	6.32	6.33	6.31	6.07	6
SEER	7.58	7.83	7.92	8.34	8.59	7.83	8.16
η _{s, c}	300	310	304	331	340	310	323
Sound pressure at 1 m (dBA)	77	77	76	76	77	79	80

Ratings in accordance to Ecodesign, fixed water flow and fixed outlet (FW/FO). For other Ecodesign calculations please contact your JCI Representative. The table above shows only a representative sample of performance points based on generic project operating conditions working with R513A refrigerant. For larger capacities up to 3500 kW or R134a information, contact JCI Representative. The above data is based on Johnson Controls' selection software YORKworks 21.00. Please refer to the latest version of the software for specific projects.

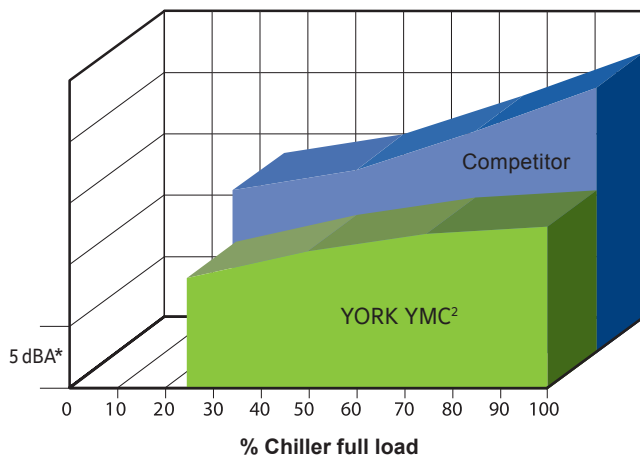
Technical data

YMC ²			S0800AA	S1000AA	S1200AB	S1400AA	S1600AB	S1800AB	S2000AB
Dimensions	Length	mm	3048				4267		
	Width	mm	1880				2007		
	Height	mm	2410				2499	2573	
Shipping weight (kg)			5171		5810		6579	7809	
Refrigerant charge (kg)			278	280	423	454	445	612	656

1. All dimensions are approximate. Certified dimensions are available on request.
2. Refrigerant charge quantity and shipping weights will vary based on tube count.
3. Shipping weights are based on fully assembled and charged units.
4. Refer to product drawings for detailed weight information.

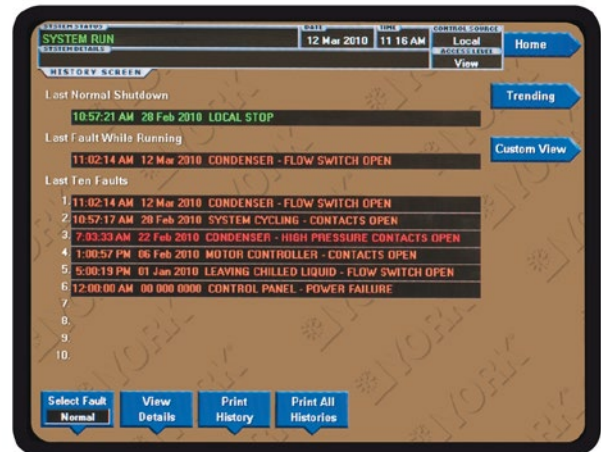
Superior sound reduction

A-Weighted sound pressure level (dBA (re: 20μPa))
Measured in accordance with AHRI-575



The YMC² chiller is so much quieter than competitive magnetic-bearing chillers, it sounds about half as loud.
*Note: each segment on the Y axis = 5 dBA.

OptiView control centre



The OptiView control centre provides complete diagnostics to speed troubleshooting.



Manufacturer reserves the rights to change specifications without prior notice.